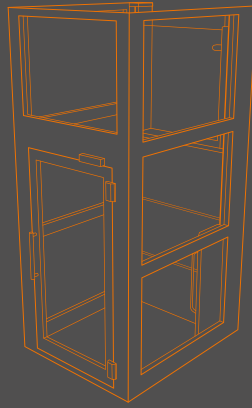


HOMELIFT
**DURA
PORTE** THE SMART
SOLUTION
FOR EASY
RETROFITTING



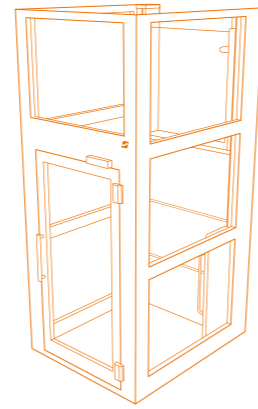
ascendor[®]
LIFTECHNIK



PLATFORM STAIRLIFT
HOMELIFT
CABIN LIFT
VERTICAL PLATFORM LIFT

VERSATILE APPLICABLE

The Ascendor Homelift DuraPorte is a modern platform lift in a high-quality aluminium shaft. Particularly robust materials and user-friendly technologies make it the all-purpose solution for anyone who needs assistance overcoming vertical height differences.



PLAT FORM LIFT



DURAPORTE
DURABLE FOR
GENERATIONS

What others call luxury is standard for us. The tried and tested Homelift impresses with the high-quality and durable workmanship of the shaft. Further highlights are the elegant exit between the guide rails in the upper landing and the design option as a high and half-height shaft.



INTERIOR
A REAL EYE-
CATCHER IN
ANY ROOM



OUTDOOR
ENCLOSED ROOFED
PLATFORM LIFT



Click here for product video



DETAILS AT A GLANCE

- ① Half-height door (optionally automated)
- ② Door in shaft (optionally automated)
- ③ Electric emergency lowering
- ④ Grab handle
- ⑤ Platform standard colour white
- ⑥ Glass-aluminium shaft
- ⑦ Platform with anti-slip surface
- ⑧ Door closer / door drive
- ⑨ Running face
- ⑩ Information display + Up-Down button + Emergency stop button + Emergency call button
- ⑪ LED lighting

PLATFORM CONTROL PANEL



EQUIPMENT

- † For indoor and outdoor use
- † Easy retrofitting

MATERIALS

- † Floor made of anodised aluminium chequer plate
- † Platform made of robust aluminium-steel composite material
- † Lifting column made of anodised aluminium

TECHNICAL DATA

- † Payload 385 kg
- † Driving speed up to 0.15 m/sec
- † Travel height up to 3 m

A **colour display** provides information on the current status and the measures taken. This means that 80% of all malfunctions can be avoided.



*symbol image



SAFETY

- Integrated error memory
- Robust door drive with slipping clutch
- Reliable door lock
- 2-way emergency call system



ASSEMBLY

- Simple and quick installation (without crane up to 3 m)
- Uncomplicated transport
- Good accessibility for maintenance
- Travel height can be adjusted in case of measurement errors

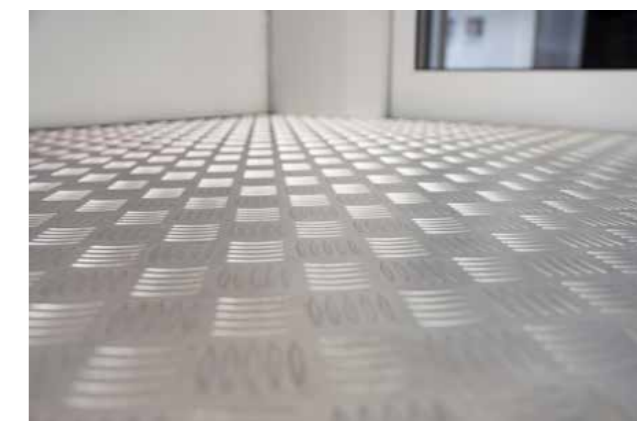


DESIGN

- LED RGB lighting (optional)
- Minimal space required next to lifting column
- Graphic display with status indication
- Stainless aluminium lifting column

PRODUCT HIGHLIGHTS

LED platform lighting (optional) - select from an infinitely adjustable array of colours to mirror your mood or blend in with your surroundings. Turn your lift into an attractive eye-catcher. Mobility from ASCENDOR is just beautiful.



The **ribbed base plate** ensures an optimal grip for wheelchair users. (Carpet on request)



The **integrated grab handle** provides additional comfort and safety.

High-quality materials from powder-coated steel to anodised aluminium guarantee maintenance-free and trouble-free operation.



FAST ASSEMBLY

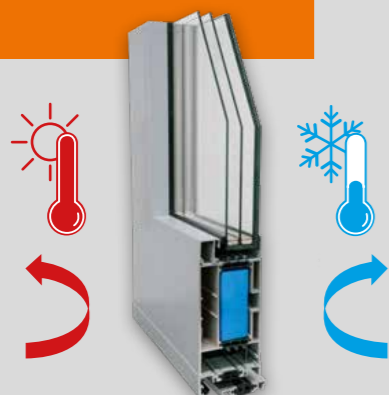
THERMAL DOOR

- ① Thermally insulated door
- ② Stainless aluminium lifting column
- ③ Up to 3 m lifting height
- ④ Graphic display with status indication and integrated error memory
- ⑤ Reliable door lock
- ⑥ Optional LED RGB lighting
- ⑦ Optional ramp in front of the shaft



CROSS-SECTION THERMAL DOOR

- † Highly thermally insulated frame and sash profile in flush design (total $U_d = 1.11 \text{ W/m}^2\text{K}$)
- † Triple insulating glazing with VSG safety glass ($U_g = 0,6 \text{ W/m}^2\text{k}$)
- † Insulation insert for improved U-value (thermal transmittance)
- † Roller hinges for a visually appealing design
- † Airtight and windproof insulation
- † Increased burglar resistance thanks to triple locking system



CUSTOMISED VARIANTS OF THE LANDING DOOR

| | Not thermally insulated | Moderately thermally insulated | Highly thermally insulated |
|---------------------|--|---------------------------------|--|
| Insulation value | No insulation | $U 2,4 \text{ (W/m}^2\text{K)}$ | $U 1,11 \text{ (W/m}^2\text{K)}$ |
| Insulation | ●● | ●●●● | ●●●●● |
| Waterproof | — | ●●● | ●●●●● |
| Area of application | Balcony, staircase, external staircase | Staircase, unheated rooms | Heated interior rooms (kitchen, living room, bedroom...) |

TECHNICAL DATA

BENEFITS

- † For indoor and outdoor use
- † Soft start/soft stop via a frequency-controlled drive system
- † Optimum ratio between space requirement and usable platform area
- † Weatherproof aluminium shaft
- † Safety glazing
- † Emergency telephone

COLOUR

- † Car and shaft standard white
- † Lifting column anodised aluminium

CONTROL & OPERATION

- † Push-button operation at car / radio wall button for landing call stations
- † Full graphic colour display
- † Integrated fault memory
- † Numerous setting options
- † Electrical emergency lowering

DRIVE

- † Guide chain system with electric drive 0.75 kW
- † Safety catcher with integrated speed limiter

POWER SUPPLY

- † 220-240 V, 1 phase, 16A

DRIVING SPEED

- † up to 0,15 m/sec

LOAD CAPACITY

- † 385 kg

INSTALLATION

- † Simple retrofitting
- † Split delivery of the rail

TRAVEL HEIGHT

- † 800 mm to 3000 mm

REQUIRED SPACE

- † 1693 x 1388 mm (LxW) with closed doors

DOOR

- † 930 mm clearance width
- † possible on 3 sides in the lower stop

STOPS

- † 2 Stops

PLATFORM SIZE

- † 1400 x 1100 mm (LxW)

OPTIONS

- † Voice output
- † Automatic door operators
- † LED RGB lighting
- † Automatic emergency power supply
- † SMS remote query of operating states

ASCENDOR PRODUCT WORLD



PLATFORM STAIRLIFT

- † True space miracle
- † Integrated fault memory
- † Stainless steel handrail
- † Easy assembly



Click here for product video

QUATTROPORTE

- † Weatherproof for outdoor use
- † No shaft necessary
- † Thermally insulated doors
- † Simple and elegant



Click here for product video



VERTICAL PLATFORM LIFT

- † Indoor and outdoor
- † Free-standing lifting column possible
- † Simple and quick assembly
- † Minimal space requirement



Click here for product video

UNAPORTE

- † No shaft necessary
- † Simple and quick assembly
- † Reliable door lock
- † Rustproof aluminium lifting column



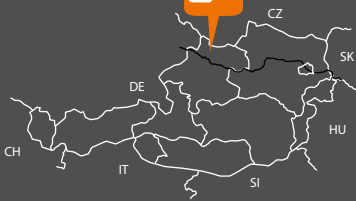
Click here for product video



ASCENDOR

INNOVATIVE LOCATION

REGIONAL
ANCHORED,
GLOBAL
ALIGNED



MADE in AUSTRIA

Our company headquarters as well as the design and production are located in Austria. We set new standards with our lifts in terms of design, safety and quality.

Research and development thanks to highly qualified engineers and mechatronics engineers has top priority.



ascendor[®]
LIFTTECHNIK

Ascendor GmbH

Pürnstern 43 · 4120 Neufelden · Austria
Tel.: +43 7282 21900 · office@ascendor.at
ascendor.com



Subject to errors and changes.

V 05/2024